



**CEDAR POINT YACHT CLUB**  
**Lightning/Flying Scot Early Bird Regatta**  
May 20<sup>th</sup> - 21st, 2006

**SAILING INSTRUCTIONS**

**1. RULES**

The Regatta will be governed by the rules as defined in *The Racing Rules of Sailing*. Where there are discrepancies between the Sailing Instructions and the Notice of Race, the Sailing Instructions shall prevail.

**2. NOTICES TO COMPETITORS**

Notices to competitors will be posted on the Official Notice Board located on the south wall of the CPYC clubhouse.

**3. CHANGES IN SAILING INSTRUCTIONS**

Any change in the sailing instructions will be posted before 0830 on the day it will take effect, except that any change to the schedule of races will be posted by 1900 on the day before it will take effect.

**4. SIGNALS MADE ASHORE**

- 4.1 Signals made ashore will be displayed at the flag pole located in front of the Clubhouse.
- 4.2 When flag AP is displayed ashore, removing it means either an abandonment signal will follow immediately or a race signal will be made on the water 60 minutes after removal. This changes race signal AP.

**5. SCHEDULE OF EVENTS**

<b>May 20</b>	0930 – 1030	Registration
	1030	Skipper's Meeting
	1100	Harbor Start (Gun)
	1200	Warning Signal, 1 <sup>st</sup> Race
	1600	Hors d'hoerves & Dinner
	2000 – ???	Party & House Band

<b>May 21</b>	0900	Harbor Start
	1000	Warning Signal

No warning signal will be made after 14:00 on Sunday.

**6. CLASS FLAG**

The class flag will be the Lightning Class flag or Flying Scot Class flag.

**7. RACING AREA**

- 7.1 The racing area will be approximately one mile southeast of the mouth of the Saugatuck River.
- 7.2 Low tide – Saturday: 1152am Sunday: 1252pm

**8. THE COURSE**

- 8.1 The diagrams attached show the possible courses, including the approximate angles between legs, the order in which the marks are to be rounded or passed, and the side on which each mark is to be left.

- 8.2 The course letter(s) and approximate compass bearing from the starting line to Mark 1 will be displayed from the race committee signal boat.

**9. MARKS**

All marks will be inflatable shapes.

**10. THE START**

- 10.1 Races will be started in accordance with Rule 26, with independent (non-rolling) starting sequences.
- 10.2 The starting line will be between a staff displaying a orange flag on the race committee signal boat at the starboard end and the course side of the port-end starting mark.
- 10.3 A boat may not start a race later than 4 minutes after her starting signal.

**11. INDIVIDUAL RECALLS**

- 11.1 The race committee will attempt to hail the sail numbers of OCS boats.
- 11.2 When a starting penalty of rule 30 is in effect, hails will be attempted during the minute before the starting signal
- 11.3 Neither the race committee procedure for hailing boats that were OCS nor the failure of a boat to hear the hail will be grounds for redress. This changes rule 62.1(a).

**12. THE FINISH**

The finishing line will be between a staff displaying a orange flag on a race committee boat and the course side of the finishing mark.

**13. TIME LIMIT**

- 13.1 The time limit for each race will be 2 hours.
- 13.2 Boats still racing after the time limit, or more than 30 minutes after the first boat sails the course and finishes, whichever is later, will be scored "Did Not Finish". This changes rules 35, 63.1, A4 and A5.

**14. PROTESTS**

- 14.1 In addition to the requirements of rule 61.1(a), a boat intending to protest about an incident that occurs in the racing area shall notify the race committee of its intention, including the sail number of the boat(s) being protested, at the earliest time reasonably possible after finishing or withdrawing from the race.
- 14.2 Protest forms are available at the race office. Protest shall be delivered there within 60 minutes after the race committee signal boat docks. The docking time will be posted on the Official Notice Board.
- 14.3 Notices will be posted within 15 minutes after the protest time limit to inform competitors of hearings in which they

are parties or named as witnesses. Protests will be heard in approximately the order of receipt as soon as possible.

- 14.4 Breaches of instruction 16 will not be grounds for a protest by a boat. This changes rule 60.1(a). Penalties for these breaches may be less than disqualification if the protest committee so decides

### 15. SCORING

- 15.1 The Low-point scoring system of Appendix A will apply unless modified by the Lightning or Flying Scot Class Rules, which would be specific to that fleet only.
- 15.2 One race must be complete to constitute a series.

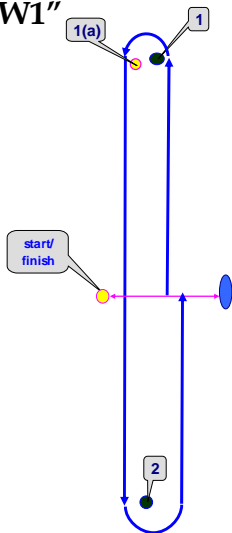
- 15.3 There will be no throwout unless 5 races are completed.

### 16. SAFETY

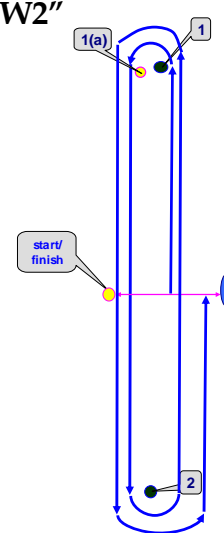
- 16.1 Boats must carry all the safety equipment required by their classes.
- 16.2 Prior to the warning signal for the first race of each day in which it intends to compete, each boat shall sail by the race committee signal boat and check in by hailing its sail number.
- 16.3 A boat retiring from a race or leaving the racing area early shall promptly notify the race committee either by hail, on VHF channel 78, or by telephone to the CPYC Club Manager at (203) 226-7411.

## Addendum 1 – Courses

### Course "W1"



### Course "W2"

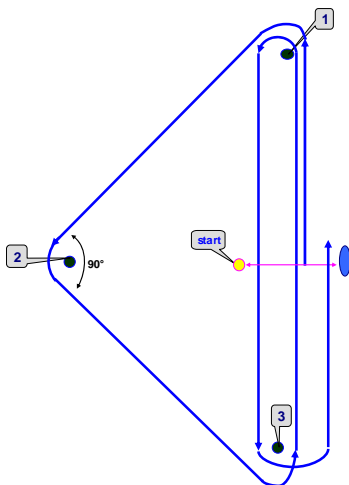


### Windward-Leeward Course

**W1:** Start - Mark 1, Mark 1(a) Offset, Mark 2, Finish

**W2:** Start - Mark 1, Mark 1(a) Offset, Mark 2, Mark 1, Mark 1(a) Offset, Mark 2, Finish

### Course "T"



### Triangle- Windward-Leeward Course

Start – Mark 1, Mark 2, Mark 3, Mark 1, Mark 3, Finish