



INTERNATIONAL STAR CLASS YACHT RACING ASSOCIATION



2016 Cedar Point Open

Bedford Pitcher

September 10-11, 2016

Cedar Point Yacht Club

Westport, Connecticut, USA

SAILING INSTRUCTIONS

1 Rules:

The regatta will be governed by the *rules* as defined in the Racing Rules of Sailing (RRS). In the event of conflict between the Notice of Race and the Sailing Instructions the Sailing Instructions will prevail.

2 Notices to Competitors:

Notices to competitors will be posted on the official notice board located on the south wall of the CPYC clubhouse.

3 Changes in the Sailing Instructions:

Changes in the Sailing Instructions will be posted before 0900 of the day they will take effect, except that any change in the schedule of races will be posted by 2000 on the day before it will take effect.

4 Signals Ashore:

4.1 Signals made ashore will be displayed from the CPYC flagpole.

4.2 When flag AP is displayed ashore, removing it means either an abandonment signal will follow immediately, or a race signal will be made on the water 60 minutes after removal.

This changes RRS Race Signal AP.

5 Schedule:

5.1 Five races are scheduled, three on Saturday and two on Sunday. NOTE: In the event that 3 races are not completed on Saturday September 10, 2016, up to three races may be sailed on Sunday, September 11, 2016.

5.2 There will be a skippers' meeting at 1000 on Saturday near the CPYC flagpole.

5.3 There will be a harbor start at 1030 on Saturday and 0930 on Sunday. The warning signal for the first race of each day is scheduled for one hour after the harbor start.

5.4 Saugatuck River entrance tidal information for each day is as follows:

Day	Low	High
Saturday	1226	1834
Sunday	1324	1930

5.5 No warning signal will be made after 1430 on Sunday, September 11, 2016.

6 Class Flag:

The Class Flag will be the Star Class flag.

7 Racing Area:

The racing area will be in Long Island Sound approximately 1 to 3 miles southeast of the mouth of the Saugatuck River.

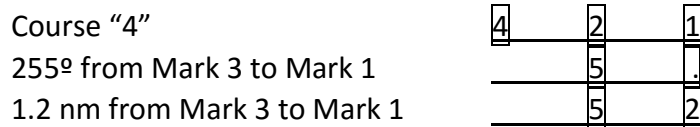
8 Course:

8.1 Course "0", Course "1", Course "3", or Course "4", as described in the RULES OF THE ISCYRA rule 34.3, may be used. Rule 34.3 is changed to provide that the course distance will be set by the race committee. The courses, including the order of marks and approximate angles, are shown on Illustration A.

8.2 The courses of rule 34.3 are modified so that Mark 3 will be the starting mark, a mark of the course and the finishing mark as shown on Illustration A.

8.3 The course designation, and the approximate compass bearing and distance in nautical miles from Mark 3 to Mark 1 will be displayed on the race committee signal boat prior to or with the warning signal.

8.4 Course example:



8.5 RULES OF THE ISCYRA rule 34.3.1 is changed to provide that courses may be shortened.

9 Marks:

Marks will be orange inflatable shapes.

10 Check In:

Prior to the warning signal for the first race of the day in which it intends to compete, each boat shall sail past the stern of the race committee signal boat to be recorded.

11 The Start:

11.1 The starting line will be between the staff from which an orange flag is displayed on the race committee signal boat and the port end starting mark.

11.2 Races will be started in accordance with RRS rule 26.

11.3 Except after a postponement or general recall, the race committee will make a series of short sound signals to alert competitors to the upcoming warning signal.

11.4 A boat may not start more than 10 minutes after the starting signal.

12 Recalls:

12.1 When an individual recall is signaled, the race committee will attempt to hail the sail number(s) of the boat(s) that are OCS.

12.2 Neither the race committee procedure for hailing boats that were OCS, nor the failure of a boat to hear the hail, will be grounds for redress. This changes RRS rule 62.1.

12.3 When a starting penalty of RRS rule 30 is in use, the race committee may hail sail numbers during the minute before the start.

13 The Finish:

13.1 The finishing line will be between the staff from which an orange flag is displayed on a race committee boat and the nearby finishing mark.

13.2 Flag H displayed from the finish boat means "Racing is done for the day."

14 Time Limit:

14.1 The time limit for the first boat will be 2-1/2 hours.

14.2 Boats which start a race and are still racing 30 minutes after the first boat sails the course and finishes will be scored "Time Limit Expired" and will receive points equal to one more than the number of finishers. This changes RRS rules 35, 63.1, A4 and A5.

15 Protests:

15.1 Protest forms are available at the race office located on the first floor of the CPYC clubhouse. Protests and requests for redress shall be delivered to the protest committee representative there within the protest time limit.

15.2 The protest time limit is one hour after the race committee signal boat docking time. The protest time limit will be posted on the official notice board.

15.3 Notices will be posted within 15 minutes of the protest time limit to inform competitors of hearings in which they are parties or named as witnesses. Hearings will be held in the race office on the first floor of the CPYC clubhouse beginning as soon as practical.

15.4 Notices of protests by the race committee or protest committee will be posted to inform boats under RRS rule 61.1(b).

15.5 RRS Rule 63.3 is changed to provide that only the skipper or crew may represent a boat at protest hearings.

15.6 RRS Rules 62.2 and 66 are changed to provide that, on the last day of the regatta, requests for redress and requests to re-open a hearing must be delivered within 1/2 hour of the time final results have been posted.

15.7 Breaches of instructions 10 or 17 will not be grounds for protest by a boat. This changes RRS rule 60.1(a). Penalties for these breaches may be less than disqualification if the protest committee so decides.

16 Scoring:

16.1 The Low Point scoring system of Appendix A of the Racing Rules of Sailing will apply, except there will be no throw-out unless at least four races are completed. Each boat's series score will be the total of her race scores with the worst score discarded if at least four races are completed. Five races are scheduled. One completed race constitutes a series.

16.2 All boats will be scored in determining overall winners.

17 Safety:

Competitors leaving the race course before the end of a race or leaving the racing area before the end of racing for the day shall inform the race committee or the CPYC club manager as soon

as possible. Competitors not leaving the dock on a race day shall inform the race committee or club staff. The club monitors VHF channel 78.

18 Crew Changes:

A change of helmsman will not be permitted.

19 Radio Communication:

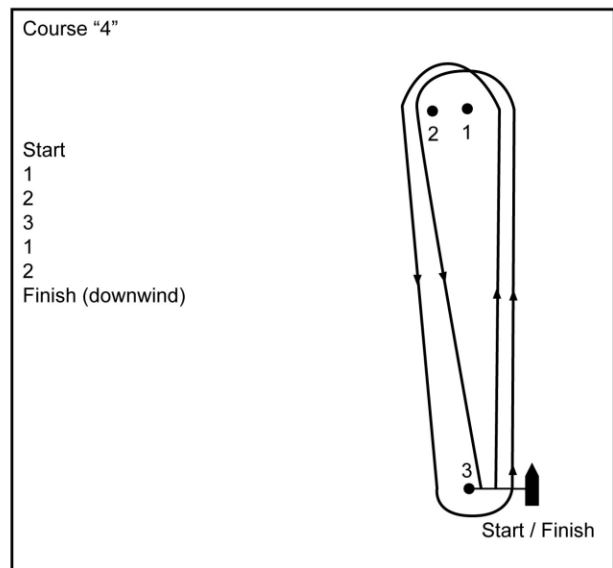
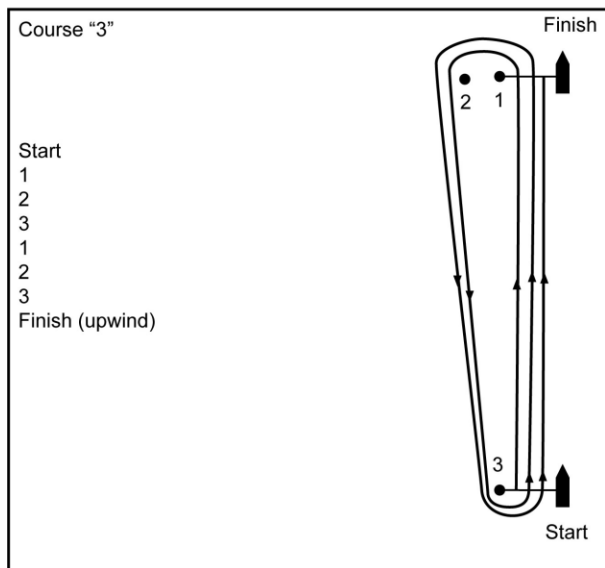
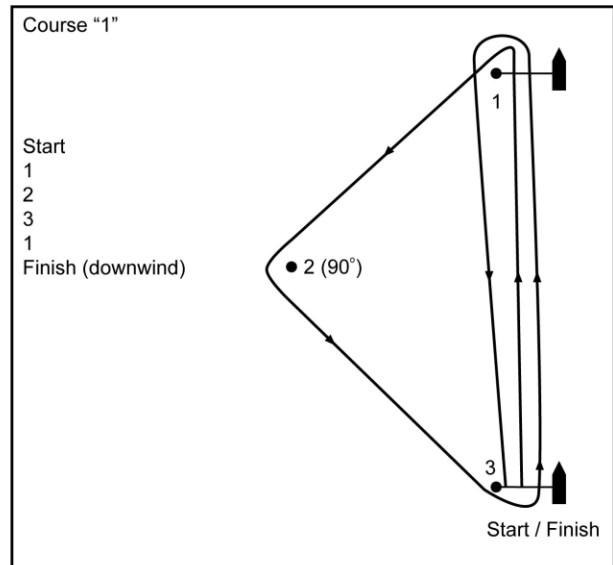
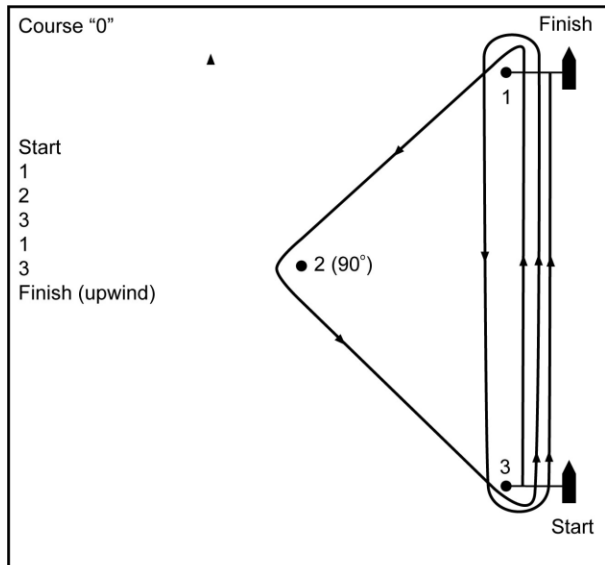
A boat shall neither make nor receive radio transmissions (including cellular telephone) while racing.

20 Prizes:

The Bedford Pitcher Perpetual Trophy will be awarded to the winning team. The Central Long Island Sound Star Fleet shall retain possession of the Bedford Pitcher Perpetual Trophy. Additional trophies will be awarded to the skipper and crew of the boats finishing first through third overall with a separate trophy awarded to separate subclasses.

Illustration A

Courses for 2016 Bedford Pitcher



ALL COURSES ARE MODIFIED SO THAT THE START IS BETWEEN THE RC BOAT AND MARK 3

LEEWARD MARK 3 WILL BE THE STARTING MARK

LEEWARD MARK 3 WILL BE THE FINISHING MARK

THE FINISH LINE ON COURSES 0 AND 3 IS BETWEEN THE RC BOAT AND MARK 1

THE FINISH LINE ON COURSES 1 AND 4 IS BETWEEN THE RC BOAT AND MARK 3

THERE WILL BE NO OFFSET MARKS ON COURSES 0 OR 1

LEG LENGTHS WILL BE SET BY THE RACE COMMITTEE